



Yoshida Fountain Kit

Installation Manual



Blue Thumb

For use with
Large Real Stone Fountains
on an Altum Basin

ALTUM AQUABOX® BASIN INSTALLATION

ATTENTION!

These real stone fountains are heavy, consideration during basin installation and fountain placement:

1. When determining fountain location **AVOID UNDERGROUND UTILITIES**
2. **BEFORE EXCAVATION**, keep in mind the size and shape of the stone fountain relative to the basin.
3. **DURING FOUNTAIN PLACEMENT**, make sure that access to the pump is not blocked by the fountain. It is not enough to be able to remove the cover, the pump should be able to be removed from the basin.



Included with your Altum Basin:

52.5"square x 20"H Basin with 4 molded supports, 2-piece Grate, Pre-cut Screen, Center Support column, Pump Access Cover.

Recommended Tools for Installation:

Shovel, Marking Paint, Level, and Tamp

!!! READ FULL INSTRUCTIONS !!!
Before digging your basin hole you will need to determine preferred fountain placement and set-up for easy pump access.



1

STEP 1 Choose Basin Location

Consider your fountain location. Keep it near your preferred viewing area where both water and electricity services are accessible for the pump and fountain you will be adding. If your basin comes with a cardboard cover, you may leave it in place to keep dirt from falling in during installation.

If uncertain about underground utilities call your utility company or Miss Dig.

Prepare to excavate by using marking paint to trace around your basin about 1"-2" wider than the top. Move basin aside.



2

STEP 2

Excavation of Basin Area

Using a shovel, dig 21" straight down into the ground, slightly wider than the fountain basin making sure to remove any sharp rocks or roots.



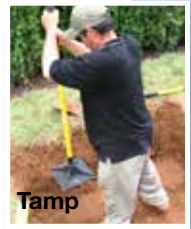
2



Level

STEP 3 Level and Tamp Soil

Level the bottom of the hole with sand or small gravel and tamp to ensure no settling occurs after installation. Solid ground is very important keeping your fountain level over time.



Tamp

STEP 4 Set Basin in Place

Set basin in the hole and verify that the box top is level and approximately 1" below grade.

Position the basin within the hole. Make sure the pump opening in the grate is orientated near electrical service.



STEP 5 Level and Check for a Solid Set

Using a level, confirm that the fountain basin is perfectly level from side to side and front to back. The basin must sit firmly and evenly on the compacted, leveled surface below.

Do not allow the lip or rim of the basin to rest on surrounding soil, stone, or decking. Supporting the basin by its edge can create uneven stress and may cause warping or buckling over time.

Ensure the entire bottom surface is fully supported before proceeding with installation.



STEP 6 Install Auto Fill Kit

You may bury your water supply line and make any Auto Fill connections at this time. Follow the instructions in your Auto Fill Kit.



STEP 7 Backfill

Backfill around the box and soil using excavated soil or self-compacting material such as sand or pea gravel. When using excavated soil be sure to regularly compact with a tamper.

If your basin included a cardboard cover leave it in place while you backfill to prevent soil from falling into the basin.

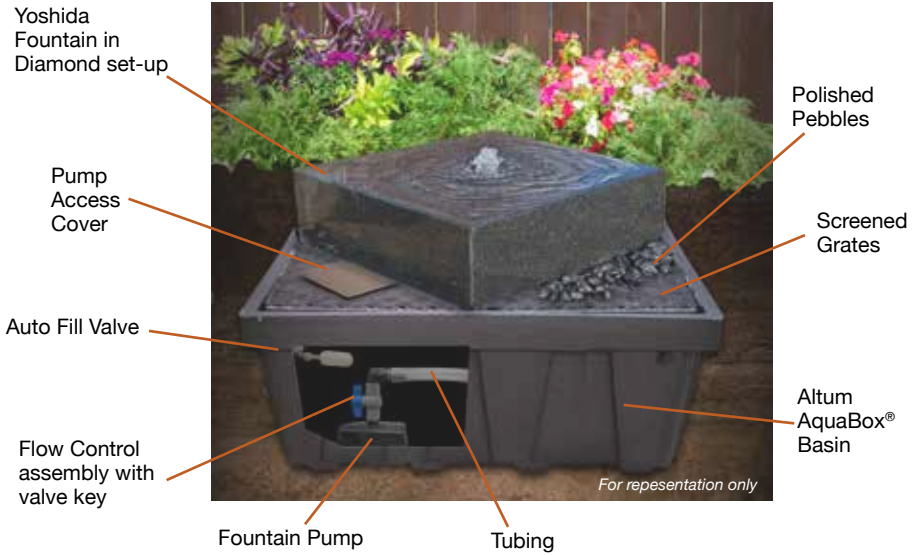


Important for Filling your Basin

Once Altum Basin is in place, clean and fill basin

Remove cardboard and vacuum out any dirt that may have fallen into the basin then wipe clean before adding water.

YOSHIDA FOUNTAIN INSTALLATION

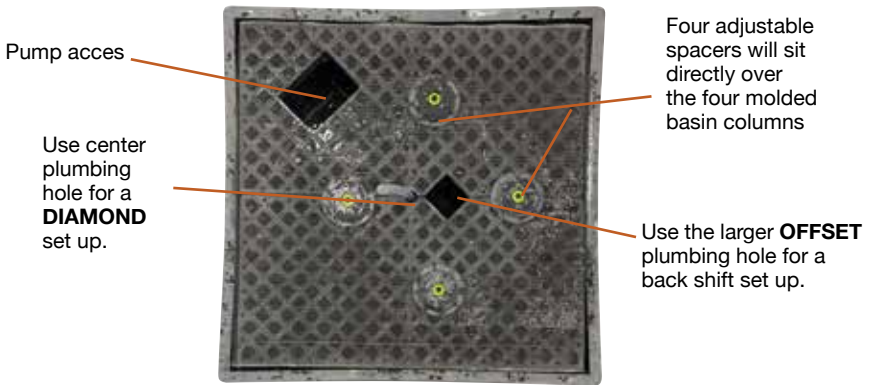


An additional PVC Support Column is provided to place in center of the basin, although it is not required for these Yoshida Fountains.

AND PUMP ACCESS SET-UP OPTIONS

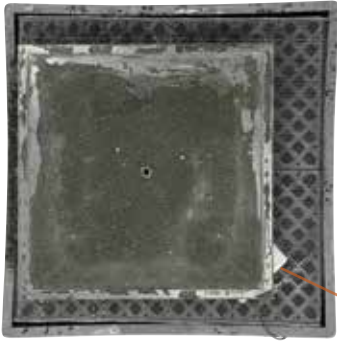
Yoshida Altum Basin Set-up Options

Due to the size and weight of this fountain we suggest a couple set-up variations for ease of pump insertion and removal.



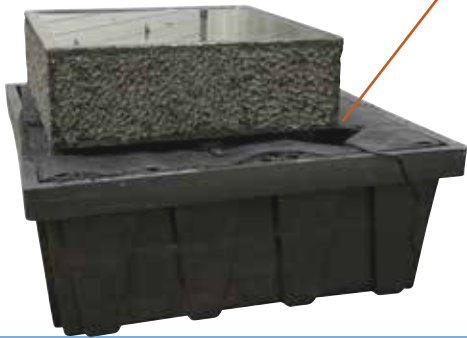
NOTE: When placing your Yoshida Fountain make sure the fountain is placed so that the pump access is open for pump insertion and removal.

OPTION 1: OFFSET SET-UP



Offsetting to an edge of the basin away from the pump access leaves just enough room to gently twist the pump out of (or into) the basin under the corner of the fountain.

This set up is easier to landscape but a bit more challenging for pump access and removal, although it is workable.



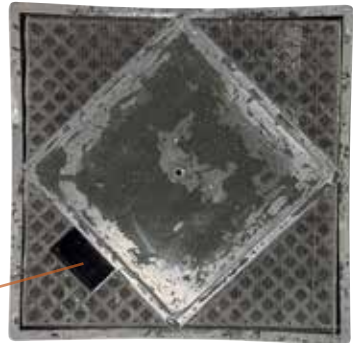
Pump Access



OPTION 2: DIAMOND SET-UP

Diamond set-up will require placing the fountain turned so the pump is accessible on the fountain's side.

When installing, extra consideration is needed in determining which direction the fountain will face and adjusting the basin excavation accordingly.



Pump Access



YOSHIDA FOUNTAIN INSTALLATION



STEP 1 Place Grates and Screen

Place the grates on the water-filled basin and cover with the screen, matching the holes cut to the plumbing holes.



STEP 2 Tubing Placement

Feed the tubing through the center of the grate OR offset hole, depending on your chosen setup, (Refer to pages 4 and 5.) Leave several inches of tubing above the grate. Take care not to bend or kink your tubing.



STEP 3 Connect Plumbing to Pump

Connect the discharge assembly to the pump. Connect other end of tubing to the discharge assembly.

Place the assembled pump and plumbing in the basin laying the pump on its side for better tubing placement.



STEP 4 Fountain Setup

Bring the fountain into place centered directly above the tubing extending above the basin grate, using care to **make sure your fountain is oriented keeping the pump access open.**

Pull the tubing up through the fountain. If needed, use the provided o-ring to hold the tubing in place.

You may fill your basin with clean water at this point. Add water until the basin is full to the bottom of the grates.



STEP 5 Place adjustable spacers

5a Place adjustable spacers evenly over the molded support columns.

5b Lower the Stone Fountain gently onto the Adjustable Spacers.

At this point test accessibility of you pump and make adjustments as needed.

STEP 6 Leveling the Fountain .

6a If you haven't already added water to the fountain basin, pull out the plug and add water until the basin is full to the bottom of the grates. Plug in the pump cord to test your fountain.

6b Set the water flow and plume height by adjusting the valve with the provided red or blue valve key. With your basin filled, you may turn on your pump to make sure the water flows evenly over stone fountain, by adjusting your spacers or using shims.

You may lift and lower the fountain as you check water pooling and flow flow in all directions. Also, confirm proper pump accessibility.

STEP 7 Cover the Grate

The Adjustable Spacers are hardly viewable and easily disguised with polished pebbles while providing easier access for movement of the fountain at any future date.

Tip: If the height of the plume is lacking, insert a piece of 1" x 3/4" clear vinyl into the end of the fountain tubing. Reducing the tubing size will increase the height of the water plumes.

Splash should be kept to a minimum to avoid excessive refilling.

Finishing

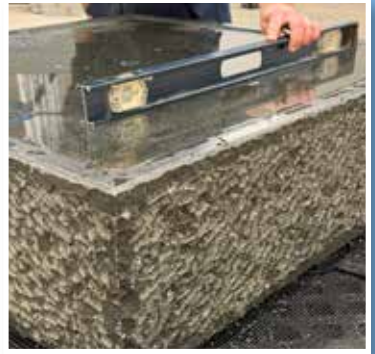
Select decorative gravel that compliments your selected fountain, adjacent landscape and is sized appropriately to not fall through the holes in the fountain basin grates.

For the best look, consider adding plants and moisture loving ground covers around the footprint of the fountain basin, or adding a fountain up-lighting kit.

ENJOY!

Grab your favorite beverage, sit back, relax, and enjoy your new fountain!

We'd love for you to share your new fountain with us and future customers on our social media platforms!



NOTE: Normal evaporation is about 1"-2" weekly, however, that is dependent on your region. Many factors including humidity, rainfall, wind, and splash will determine exactly how frequently you need to refill.

Maintenance



General Fountain and System Maintenance

- It is OK to run pump continuously 24/7, or you may choose to connect it to a timer.
- Fill evaporated water as necessary or considering installing an Auto Fill Kit #ABDAUTO.
- Add Muck Buster® #PB2682 every couple of weeks to the basin to ensure muck doesn't build-up over time and clog the pump. 3 tablets treat 500 gallons of water.
- If algae forms on columns, brush off and use Crystal Clear® Algae D-Solv® #PB2002 to quickly clear organic debris and remove odors. 1 ounce treats 360 gallons.
- It is OK to run pump continuously 24/7, or you may choose to connect it to a timer.



Auto Fill Kit
#ABDAUTO

Winterizing:

- If you live in a climate that experiences prolonged freezing conditions, we recommend removing the pump from the basin. Place the pump in a bucket of water and store it in a place that will not freeze.
- Do not drain the basin during the winter months - allow the water to freeze in the basin so that the ground doesn't cause the basin to rise or "pop up" from expansion of the freezing soil around it.
- Our Rock Columns are manufactured to withstand freezing conditions and can be left outside during the winter months. There is no need to cover the Rock Columns, but you may do so if you desire.



Muck Buster®
#PB2682

Spring Start-Up:

- Once everything has thawed in the spring we recommend draining the water in the basin and replacing it with fresh, clean water. A wet/dry vacuum works well for removing water and accumulated debris.
- Reconnect the pump and plug it in.
- Add Muck Buster® to remove any remaining muck that was not able to be removed manually.



Algae D-Solv®
#PB2002

If you need replacement parts please contact us directly at **888-619-3474** or email us at sales@bluethumbponds.com.

Now, snap a picture of your completed waterfall and post it to our Facebook page at facebook.com/bluethumbinc/!

www.shopbluethumb.com

