

THANK YOU FOR YOUR BLUE THUMB PUMP PURCHASE!

CONGRATULATIONS!

You have purchased a quality pump from Blue Thumb, manufacturer of quality pond products.

IMPORTANT — PLEASE READ BEFORE USING YOUR PUMP

To insure proper operation of your pump and receive maximum life of this product it is important that you read the owners manual completely.




PUMP INFORMATION

Blue Thumb products are created by experienced pond professionals. These multi-purpose submersible pumps are designed for use in water gardens and koi pond filtration systems, to create waterfalls and streams, in water features such as fountains, and in aquariums.

Mag-Drive models are suitable for pumping clear filtered water, such as when using a Blue Thumb Pond Skimmer Box or when placed inside a pump sock. The temperature of the water being pumped must never exceed 95 degrees Fahrenheit. Do not pump sewage, inflammable, corrosive or explosive liquids (e.g. petrol, fuel, diluters), greases, oils, or foodstuffs.

If you experience trouble with your pump please reference the Troubleshooting section on the back of this manual. If you are unable to remedy the problem please contact your local Blue Thumb dealer for further assistance.

FOR YOUR SAFETY

-  The power cord must never be used to lift, carry or move the pump.
-  The pump should be unplugged before taking any action on the pump, including placing it into or removing it from the water.
-  If the power supply cord has been damaged, it can not be replaced. The pump should be discarded.

Mini Mag-Drive Pump

Dimensions with 1"L cover/guard:
4"L x 2.5"W x 2.5"H

Perfect for running aquariums very small decorative fountains.



Small Mag-Drive Pumps

Dimensions with 1"L cover/guard:
5.75"L x 3"W x 4.25"H

Perfect for running smaller decorative fountains.



Medium Mag-Drive Pumps

Dimensions with 1.75"L cover/guard:
7.25"L x 4.25"W x 5"H

Perfect for running small to medium decorative water features.



Large Mag-Drive Pumps

Dimensions with 2"L cover/guard:
9.25"L x 4.5"W x 5.5"H

PB2620
Dimensions with 2"L cover/guard:
10"L x 4.5"W x 6.5"H

Perfect for running medium to large decorative water features.



Pump Sock - Bodyguard
Item# PB1557

These Mag-Drive Pumps are suitable for pumping clear filtered water, such as when using a Pump Sock - Bodyguard or a Pond Skimmer.

INSTALLING THE PUMP

- These pumps may be installed in a pond skimmer or submerged directly into the water.
- The pump must **always** have water running through it. Running the pump dry will void the warranty.
- Do not place the pump where it can become clogged with debris or gravel. Do not set the pump on the bottom of the pond to prevent the pump from draining the pond. Monitor the pump regularly to make sure the intake remains unclogged due to pond sludge.
- Plug the pump's 3-prong plug into a ground fault interrupter (GFCI) protected outlet that is in a dry place, protected against any risk of flooding. Verify that the power supply voltage and frequency match the specifications on the pump nameplate.

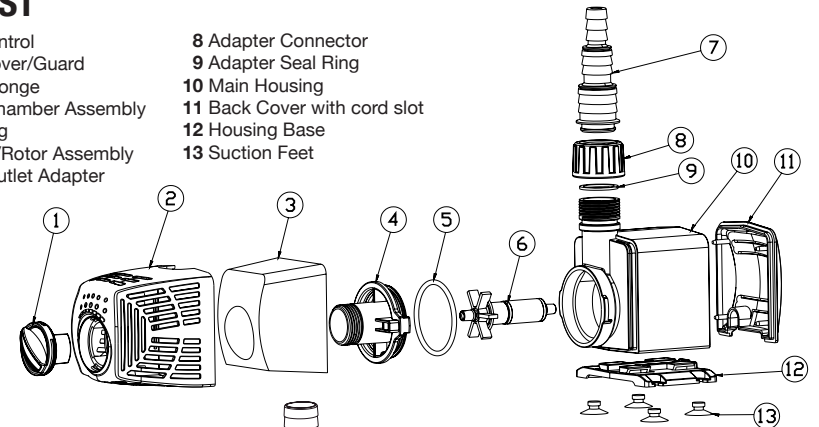
DO NOT cut the cord and direct wire the pump for any reason. Doing so will void the warranty.

WINTER OPERATION

The pump may be run during cold weather, but it is absolutely essential to prevent the pump housing and PVC pipe from freezing. In the event of freezing conditions, remove the pump from the water, empty it, and place it where it cannot freeze.

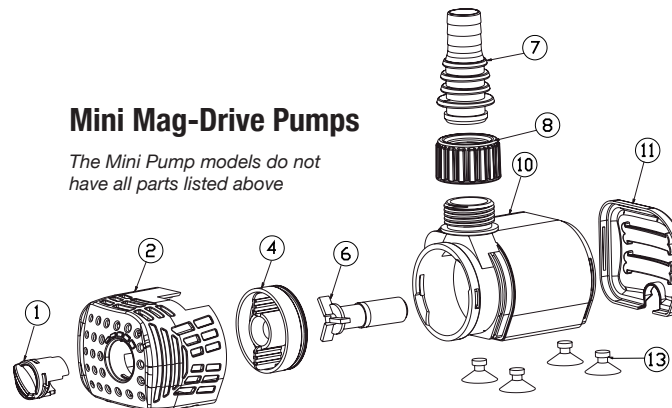
PARTS LIST

- | | |
|---------------------------|------------------------------|
| 1 Flow Control | 8 Adapter Connector |
| 2 Front Cover/Guard | 9 Adapter Seal Ring |
| 3 Filter Sponge | 10 Main Housing |
| 4 Water Chamber Assembly | 11 Back Cover with cord slot |
| 5 Seal Ring | 12 Housing Base |
| 6 Impeller/Rotor Assembly | 13 Suction Feet |
| 7 Water Outlet Adapter | |



Mini Mag-Drive Pumps

The Mini Pump models do not have all parts listed above




Note: Cord lengths vary with pump size, all come with a 3-pronged plug.

TIP: Removing the cover is the most intimidating part of servicing these pumps but once you do this you won't forget.

Looking at the top of the pump, "tap" down on the front cover near the outside edge to release it. (Part #2) The cover will "break" loose and can be cleaned at this point. The grip is firm, which is why it is difficult to pull it apart, especially if it is wet.

TROUBLESHOOTING

 Before taking any troubleshooting action, disconnect the pump from the power supply by removing the plug from the socket.

Problem	Possible causes	Solutions
The pump does not run.	<ul style="list-style-type: none"> • Power cord unplugged. • Impeller jammed. 	<ul style="list-style-type: none"> • Plug cord securely into the socket and check if there is voltage on the line. • Disconnect the power cord, remove impeller cover and check if impeller is free to run. • Check to see if the circuit protector needs to be reset.
The pump runs but does not deliver water.	<ul style="list-style-type: none"> • Water level under the suction minimum. • Air bubble in the pump, produced during the plunge. • Suction filter clogged. • Discharge tube clogged or obstructed. 	<ul style="list-style-type: none"> • Stop the pump, do not run the pump dry. • Add water • Get the air out by plunging the pump while in a tilted position and shake it with the discharge tube open. • Disconnect power cord, clean the pump bottom. • Disconnect power cord: take off the tube and clean it.
The pump stops running automatically.	<ul style="list-style-type: none"> • The thermal overload protection system stopped the pump. • A foreign object has jammed the pump. • The pump was used in hot water. • The pump ran dry. 	<ul style="list-style-type: none"> * Disconnect the power cord, correct the reason for overheating; then wait until the pump is cooled, plug the cord and resume operation.

60-MONTH LIMITED WARRANTY

Blue Thumb Mag-Drive Pumps are warranted against defective material and workmanship under normal use for a period of 60 months from the date of purchase by the original purchaser. Replacement liability in all events is limited to replacing or repairing at Blue Thumb's sole discretion of any part or parts which are defective in material or workmanship. Proof of purchase is required on all claims in the form of invoice copy, sales ticket, etc. Warranty is void if pump is not installed as per these instructions. All pumps returned will be inspected to determine cause of failure before warranty approval.

The warranty and remedy described in this limited warranty is an EXCLUSIVE warranty and remedy IN LIEU of any other warranty or remedy, expressed or implied, which other warranties and remedies are hereby expressly EXCLUDED, including but not limited to any implied warranty of MERCHANTABILITY or FINESSE for a PARTICULAR PURPOSE. This warranty gives buyer and use specific legal rights, and buyer and user may also have other rights which vary from state to state. Some states do not allow the exclusion or limitation of incidental or consequential damages, so the above limitation or exclusion may not apply to you.

Scan to learn more on our video:

“Magnetic Drive Pumps — Product Overview and Maintenance”



Blue Thumb
2650 Schust Rd.
Saginaw, MI 48603
989-921-3474

VIEW OUR OTHER GREAT PRODUCTS AT
SHOPBLUETHUMB.COM



Mag-Drive Fountain/Pond Pumps

OWNER'S MANUAL

MAGNETIC DRIVE SUBMERSIBLE WATER PUMPS

For use in fountains, ponds,
waterfalls & aquariums



Models

PB2521 Mini 120
PB2538 Mini 180
PB2545 Small 290
PB2552 Small 370
PB2569 Medium 530
PB2576 Medium 660
PB2583 Medium 800
PB2590 Large 1110
PB2606 Large 1300
PB2613 Large 1495
PB2620 Large 1980

MAG-DRIVE PUMP SPECIFICATIONS

Model	Power (Watt)	Flow	Max. Head	Current (Amp)	Cord Length	Outlet
PB2521	7	120 gph	2.60 ft.	0.08	6 ft	½ in
PB2538	9.5	180 gph	4.70 ft.	0.12	6 ft	½ in
PB2545	16	290 gph	5.95 ft.	0.23	16 ft	¾ in
PB2552	24	370 gph	7.60 ft.	0.40	16 ft	¾ in
PB2569	33	530 gph	7.92 ft.	0.55	20 ft	¾ in
PB2576	43	660 gph	8.82 ft.	0.73	20 ft	¾ in
PB2583	58	800 gph	9.30 ft.	0.80	20 ft	¾ in
PB2590	92	1110 gph	12.20 ft.	0.85	20 ft	1 in
PB2606	110	1300 gph	13.50 ft.	1.00	20 ft	1 in
PB2613	153	1495 gph	16.70 ft.	1.46	20 ft	1 in
PB2620	250	1980 gph	20.00 ft.	2.60	20 ft	1 in

* Wattage will vary based on head pressure.