



Serenity Waterfall & Skimmer

Installation Manual



Serenity Skimmer

Installation



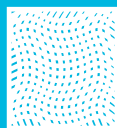
(1) Skimmer Box



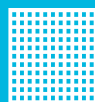
(1) Faceplate Snout



(1) Lid



(1) Filter Mat



(1) Skimmer Net



Self-Tapping
Screws & Caps



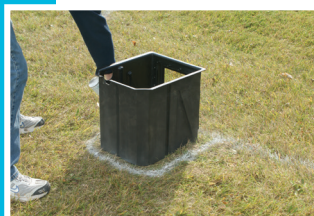
Black Silicone



STEP 1

Choose Skimmer Location

The skimmer should be positioned at the pond edge, opposite the waterfall, to circulate the water properly.



STEP 2

Excavation of Skimmer Area

Set skimmer box in intended area and spray outline of skimmer for area to be excavated.

The skimmer should be positioned so that the face of the skimmer will meet with the pond liner at the side of the pond. Excavate the hole a few inches larger than the width and length of the skimmer box.

The skimmer should be set at a depth that positions the top of the skimmer box approximately 3.5" above your desired pond water level. This will set your water level 1" below the top edge of the snout opening allowing clearance for surface debris to flow into the skimmer during normal operation.



STEP 3

Position & Backfill Skimmer

Your skimmer should be level from front to back and side to side. Make sure the base below your skimmer is compacted well to prevent settling in the future. Slide the mechanical media mat and black mesh net into position.

Once the skimmer is properly positioned begin filling the soil in around the back and sides. Be sure to pack the soil as you go to help keep the skimmer in position and to limit any settling around the skimmer. You should pack the soil tight enough so that the skimmer is held in position tightly but not so much as to distort the sides of the skimmer.



STEP 4

Attach Rubber Liner to Skimmer

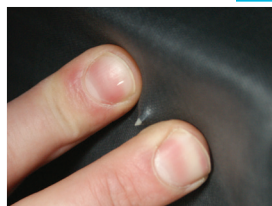
Bring the liner up to the skimmer and check the positioning of the liner against the skimmer. Use the included liner clips to temporarily hold the liner to the face of the skimmer. Be sure the liner follows the contours of the pond and the face of the skimmer. It is a good idea to leave a little slack in the liner where it transitions from the pond ledge to the face of the skimmer. This will ensure that the weight of any rockwork and water in the pond do not pull down on the liner where it is attached to the skimmer.

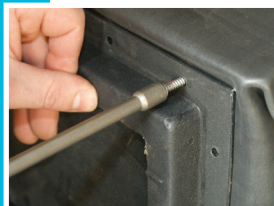
Kneel in front of the skimmer and have the following within reach: cordless screwdriver (set to lowest torque), 5/16" nut driver bit, plastic nails (included), skimmer snout (included), silicone (included), stainless steel self-tapping screws (included), black vinyl screw caps (included), utility knife (with new blade), & a clean rag.

Kneeling in front of the skimmer remove the liner clips and fold the liner back toward you leaving it rest on your lap. Using the clean rag wipe down the face of the skimmer. Also, wipe the surface of the liner that will be coming in contact with the area you cleaned on the skimmer box.

Apply a bead of silicone along the sides and bottom of the opening of the face of the skimmer. Use one of the two guide holes at the top corners of the opening as the starting point and begin by running your bead straight down from that point. The bead of silicone should be about an inch out from the edge of the opening; this will position it in-line with the screws when you attach the skimmer snout.

Bring the liner back up into position against the face of the skimmer. Hold the liner in place again with the liner clips to help keep it from moving around as you prepare to attach the snout. Gently run your fingers along the liner over the area you applied the silicone and flatten the bead out slightly. This will help ensure a more even distribution of the silicone as you compress it while screwing down the snout.





Push the guide nails through the guide holes and liner from the inside of the skimmer (this will puncture a small hole in the liner). Place the snout into position by sliding the top corner holes of the snout over the guide nails. (The snout should be installed so that the snout door hinges at the bottom and opens into the skimmer). While holding the snout in position remove one of the guide nails and drive the first screw into that hole. Keeping the snout in position, remove the other guide nail and drive a screw into the second guide hole. With the snout held into position with the first two screws, continue driving the remaining screws into the pre-drilled holes around the snout. Be sure to install screws into all pre-drilled holes to prevent water from leaking around the snout.



From inside the skimmer use your utility knife to cut out the liner in the snout area so water can flow from the pond into the skimmer. Simply follow the edge of the skimmer opening with your knife to cut away liner. This works best with a new, sharp blade.



At this time you can also trim away any excess liner that extends above the front top edge of the skimmer box.

Use your remaining silicone to run an additional bead along the joint inside of the snout where the skimmer, liner, and snout come together. Use your finger to smooth out the excess silicone.

STEP 5

Install Black Screw Caps

Push the black screw caps onto each of the screw tips on the inside of the skimmer box. We recommend placing a small dab of silicone on the end of the screw before pushing the black cap over the screw. This will help keep the screw caps in place.



STEP 6

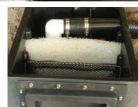
Install Submersible Pump (Not Included)

Screw your pre-assembled pump discharge assembly into your pump.

Position your pump and discharge assembly in the back chamber of the skimmer so that the top of the discharge assembly faces the discharge hole.

Bring the flexible pipe into the skimmer through the discharge hole and attach it to your discharge assembly.

Run the pump power cord over to the power source and position the cord so that it transitions out of the skimmer at the cord notch; this will allow the Natural Landscape Lid to sit flush on the skimmer.



STEP 7

Finishing Touches

Place the Natural Landscape Lid on top of the skimmer to disguise the skimmer within the landscape.



STEP 8

Maintenance

During normal operation the skimmer net will remove larger leaves and debris while the mat will remove the smaller particles allowing the clean water to flow into the pump chamber area where it can be recirculated back to the pond, preferably via the appropriately sized Blue Thumb Biological Waterfall Filter. As necessary, remove the filter mat and mesh net and clean thoroughly.

Blue Thumb recommends the following products for use with their line of Mechanical Skimmer Filters:

CLEAR WATER & SOLIDS HANDLING PUMPS

MAG DRIVE & ILLUMIFLOW PUMPS

View other great Blue Thumb products on-line at www.bluethumbponds.com.



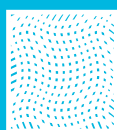


Serenity Waterfall

Installation



(1) Waterfall Box



(1) Filter Mat



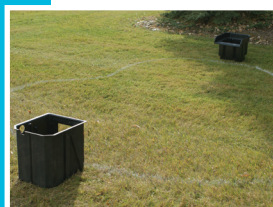
(1) Bacti-Twist®
Biological Media Bag



90° PVC
Fitting



Barbed Fitting



STEP 1

Choose Waterfall Location

The waterfall should be positioned so that the water flowing from it enters the pond opposite the skimmer to ensure proper water circulation. The waterfall is best positioned so that you can view it from the outdoor and indoor areas where you plan to enjoy your new water feature.

You can position the waterfall right at the ponds edge or at the top of a stream.



STEP 2

Assemble Waterfall Plumbing

Your Blue Thumb Serenity Waterfall Box has one spinweld fitting, located on the back side near the bottom of the box. Thread the PVC 90 adapter (included) into that spinweld (use Teflon Tape (not included) on the threads first).



STEP 3

Position Waterfall Box

Your Blue Thumb Serenity Waterfall Box has one spinweld fitting, located on the back side near the bottom of the box. Thread the PVC 90 adapter (included) into that spinweld (use the Teflon Tape (not included) on the threads first).



STEP 4

Hook-Up Flexible PVC Pipe

The Serenity Waterfalls are plumbed to accept 1.5" Flexible PVC Pipe. We recommend using Flexible PVC pipe as it is very flexible and easy to work with.

Using PVC Primer & Cement, glue the flex pipe into the PVC male adapter.

If you are using Vinyl or Kink-Free Tubing first glue the included Barbed fitting into the PVC 90 adapter using PVC Primer & Cement. Then attach the tubing to the barbed end and secure with a hose clamp.



STEP 5

Attach Liner to Waterfall

Bring the liner up to the face of the waterfall box and check the positioning of the liner against the waterfall box. The liner should follow the contours of the pond edge or stream and the face of the waterfall box. It is a good idea to leave a little slack in the liner where it transitions from the pond edge or stream to the face of the waterfall box. This will ensure that the weight of the rocks used in the waterfalls will not pull down on the liner.

Using boulders and rockwork, begin building the waterfall up the face of the box. Be sure to keep the liner pinched into position against the waterfall with the rockwork. The Serenity Waterfall has several drip points that will not allow any water to leak between the liner and the waterfall box when installed properly.

Another option is to bring the liner up behind the waterfall box so that the entire box is sitting inside the liner.



Step 6

Install Filter Media

Position the filter mat horizontally in the bottom of the waterfall box. The Serenity Waterfall includes one white mat.

Place the Bact-Twist® Biological Media on top of the white mat.

Bonus Feature

Use PondBuild 'n Foam to fill in the gaps of the rockwork leading up to the waterfall box. The foam will force the water on top of the rockwork rather than around and behind it where it can't be seen. This will give you a much more dramatic waterfall display!



For additional installation instructions view the PondBuild 'n Steps DVD.



Blue Thumb recommends the following products for use with their line of Waterfall Filters:

PONDBUILD 'N FOAM WATERFALL FOAM

For use with:

#PB1304

#PB1151

 **Blue Thumb**
Ponds / Waterfalls / Fountains

www.bluethumbponds.com

