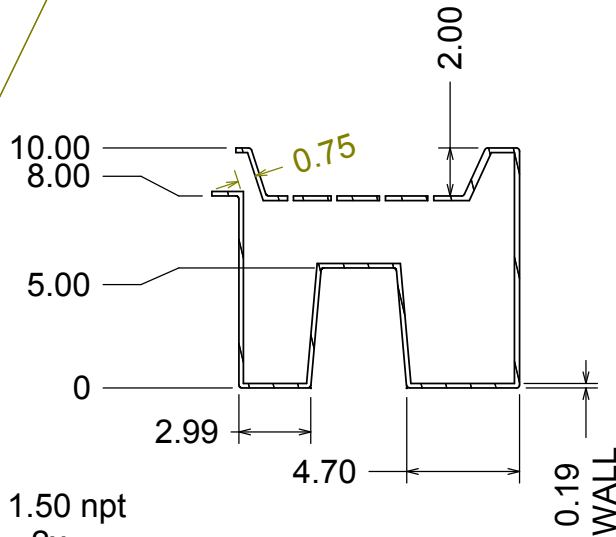
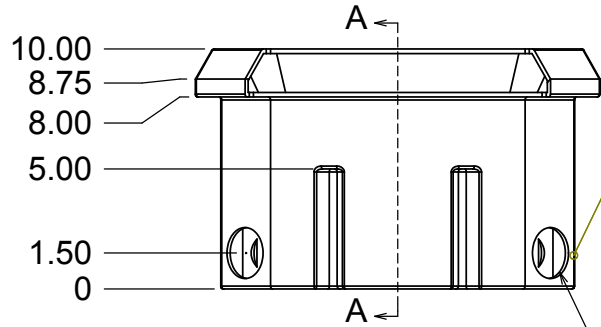
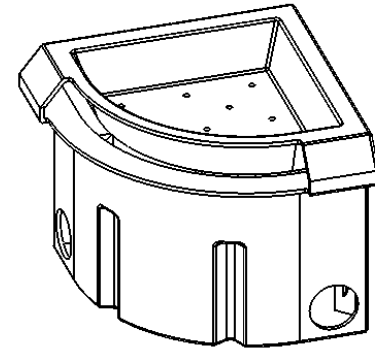
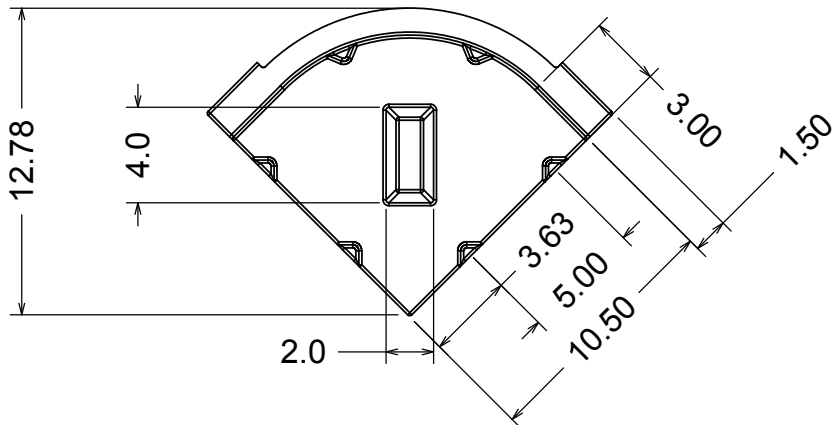
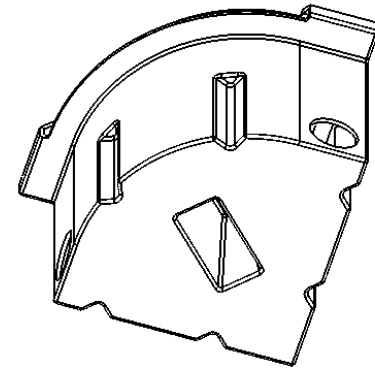


move 1/2" vent tube hole to spinweld and drill out



Ø 1.50 npt
2x

SECTION A-A



PROPRIETARY AND CONFIDENTIAL THE INFORMATION CONTAINED IN THIS DRAWING IS THE SOLE PROPERTY OF SELJAN CO.. ANY REPRODUCTION IN PART OR AS A WHOLE WITHOUT THE WRITTEN PERMISSION OF SELJAN CO. IS PROHIBITED.		DO NOT SCALE DRAWING. DIMENSIONS ARE IN INCHES. TOLERANCES UNLESS SPECIFIED: TWO PLACE DECIMAL: ±0.010 PER 1" THREE PLACE DECIMAL: ±0.01" ANGULAR: ±1° CORNER RADIUS: 0.25" ±0.13" FLATNESS: ±0.020" PER 1" LINEAR TOL.: ±0.010" PER 1"		BLUE THUMB	
DRAWN: JJS 9-21-11		12" CORNER FALLS B9450-00-159			
MATERIAL: LLDPE		SIZE A	PART NO. B9900	REV. .	
SCALE: 1:8		ENGINEERING APPROVAL: X		SHEET 1 OF 1	