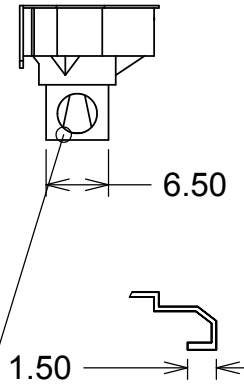
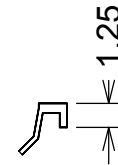
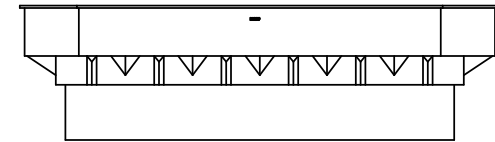


3" FPT  
spinweld  
#59hdb  
[1]

3" FPT  
spinweld  
#59hdb  
[1]

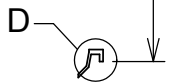
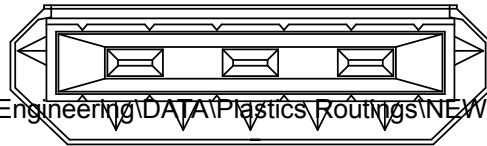


DETAIL C  
SCALE 1 : 10



DETAIL D  
SCALE 1 : 10

43.00



SECTION B-B

G:\Engineering\DATA\Plastics Routings\NEW ROUTINGS\BLUE THUMB\B9140-00-159 - 40" ELITE CASCADE BOX (B9270)\DATA\

PROPRIETARY AND CONFIDENTIAL THE INFORMATION CONTAINED IN THIS DRAWING IS THE SOLE PROPERTY OF SELJAN CO.. ANY REPRODUCTION IN PART OR AS A WHOLE WITHOUT THE WRITTEN PERMISSION OF SELJAN CO. IS PROHIBITED.		DO NOT SCALE DRAWING. DIMENSIONS ARE IN INCHES. TOLERANCES UNLESS SPECIFIED: TWO PLACE DECIMAL: $\pm 0.010$ PER 1" THREE PLACE DECIMAL: $\pm 0.01$ " ANGULAR: $\pm 1^\circ$ CORNER RADIUS: $0.25" \pm 0.13"$ FLATNESS: $\pm 0.020$ " PER 1" LINEAR TOL.: $\pm 0.010$ " PER 1"		X	
DRAWN: JJS Friday, December 02, 2011 11:40:54 AM				X <b>B9140-00-159</b>	
MATERIAL: X		SIZE <b>A</b>	PART NO. b-9270	REV. .	
SCALE: 1:20		ENGINEERING APPROVAL: X		SHEET 1 OF 1	